

capi

Indoor & outdoor collection

EUROPE



Grow a  
**greener life.**



Product  
**Catalogue** 2021





# Grow a greener life.

## Grow a greener life.

- Grow Greener** – A never ending process.
- Life** – Adding green to our home, garden, cities and lives.
- Working towards a sustainable future for ourselves and for next generations.

**We dare you to do the same. Capi Europe. Grow a greener life.**



Proud member of the ambitious frontrunners' network.



Proud partner of NL Greenlabel for a sustainable environment.

## Grow a greener life.

That is what we stand for at Capi Europe. We work on this never ending process every day. We make our home, garden, cities and lives greener.

Together we work towards a sustainable future for ourselves and for the next generations by means of our unique designer flower pots and biodiversity collection. Flower pots for indoor and outdoor use, made with recycled materials and our biodiversity collection to help birds, bees and butterflies. Get to know the collection of 2021 in this catalogue. We added new colours and products to our assortment.

A part of our production takes place in our own factory in the Netherlands where we use our own unique production method. You can read more about our production method on page 8-13.

Our planters have an extraordinary design and are of high quality. Not to mention they're lightweight –which you wouldn't say based on their robust look– and weather resistant.

Bring green into your home and garden with a look that suits you. Grow a greener life. We dare you to do the same.



We have a 2.000m<sup>2</sup> experience in our headquarters. Will you come visit soon?

## Index

### Indoor & outdoor

22 - Capi Nature **NL**

30 - Capi Urban **NL**

### Accessories

40 - Capi **biodiversity**

42 - Capi **water solutions**

44 - Xala **watering cans**

46 - Capi **accessories**

### Outdoor

54 - Capi Nature

60 - Capi **Lux**

66 - Capi **Classic**

### Indoor

72 - Special **edition**

74 - Capi Nature

90 - Capi **Lux**

98 - **Warranty & service**

**Capi Europe BV**  
Asteriastraat 17-19  
5047 RM Tilburg  
The Netherlands  
+31 (0)13 511 5050  
info@capi-europe.com  
capi-europe.com





# capi EUROPE

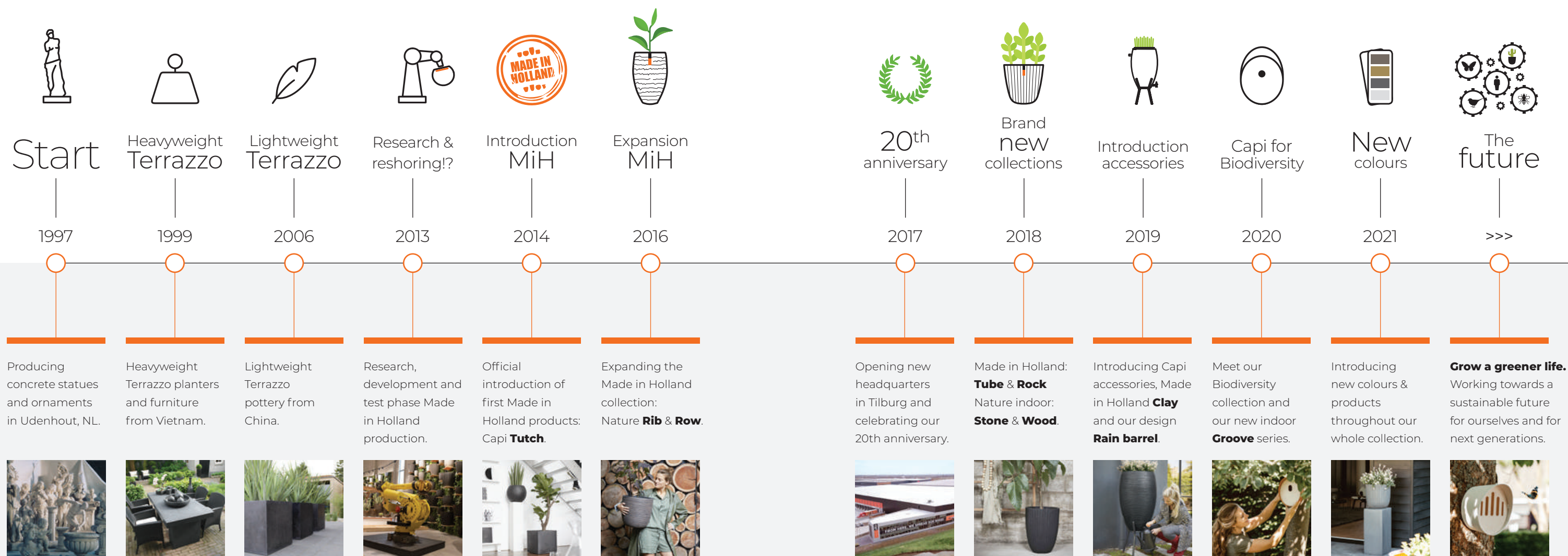
## Our story

Behind the planters, there is a story that begins in 1997. More than 20 years ago, Toine van de Ven started a one-man business in Udenhout. Over the years, the product range changed from heavy concrete sculptures and ornaments to heavy Terrazzo planters. The planters were then replaced by lightweight Terrazzo-look planters to make them easier to use. These planters are still

a big part of the Capi collection today. They have been enriched by the sustainable Made in Holland collection that originated a few years ago, along with the biggest change in Capi's history: the introduction of reshoring. Toine would never have imagined that delivering heavy sculptures would become the preliminary stage for the Made in Holland products available these days.

Within 20 years, Toine has made several big changes, with reshoring being the largest one. Nonetheless, the company has always been driven by sustainability, optimism, innovation and common sense. These are values that you will still find in Capi's DNA.

And so the story continues...







See  
orange  
*Think quality*



**Made  
in Holland**



**Recycle**

Our planters are made with recycled materials and are 100% recyclable.



**Insulating  
layer**

The orange insulating layer protects the roots of the plant from heat in summer and frost in winter. Also, this layer makes the planter extra firm, which makes it fracture-resistant.

**Indoor & outdoor**



indoor: 100%  
watertight



outdoor: drill a  
drainage hole



**10** YEAR  
WARRANTY



# THE STORY BEHIND OUR POTS

*Part of our production takes place in our own factory in Tilburg, the Netherlands. You can recognise these planters by their unique orange interior. This was intended to represent their place of origin and it is nowadays a recognisable feature of our brand. Not just a remarkable collection, also one with a great, sustainable story.*

## **Reshoring**

Back to the roots. Since a couple of years, a part of the production takes place in our own factory in Tilburg. In 2013, the first test models were made over here. The word 'reshoring' wasn't known back then, but it is right now a permanent part of our story. Reshoring, bringing back production to the Netherlands, was a big change in the history of Capi Europe. Sustainable flower pots with an orange insulating layer are the outcome of this process.

Capi Europe has developed its own rotation moulding method for the production of Made in Holland pots. We are unique throughout the world in using this particular rotation moulding technique. With this process we save up to 80% of the energy compared to traditional rotation moulding.

## **Production Process**

Made in Holland flower pots are made from a powder mixture of polyethylene including recycled materials and wood fibres. These raw materials are poured into the mould using a filling system. This is heated to melt and liquefy the mixture. The robots spin around so that everything is distributed throughout the mould. The substance is then cooled to produce the flower pot. The two layers of the pot (outer

layer and insulating layer) are made in one single cycle. Once the flower pots are removed from the machines, they proceed to the quality control via a conveyor belt. This inspection is carried out by our product specialists. Afterwards, each pot is provided with a Capi label and a barcode. This final process is run by former employees of the Diamant-Group, a company for people who have a distance to the labour market.

## **Unique insulating layer**

The Made in Holland planters consist of two layers. The outside layer shows the design of our planters. The wood fibres in the raw material give the planters a natural stone look which fits perfectly on our design planters. The second layer on the inside is a unique insulating layer. This bright orange layer shows the Dutch roots of the planter, but most important it takes care of the plants. The layer protects the roots of the plants against frost in winter and heat in summer. By adding the second layer our planters become extra strong, which makes them fracture-resistant. The second layer doesn't have a negative side effect on their weight: they are still extremely lightweight!

## **Result**

We have paid extra attention to the design of our Made in

Holland series. Although these pots can be used outdoors regardless of the wind and weather, we've noticed that more and more customers are using them indoors as a design object. That is why our Made in Holland planters are designed for indoor and outdoor use.

Each of our pots has a high level of finishing and lots of great features. All Made in Holland flower pots are resistant to frost and UV light. They also are fracture-resistant and extremely lightweight, which makes them both convenient and easy to use. All of the pots manufactured in the Netherlands are made with recycled materials and are 100% recyclable. Therefore they are very sustainable. Due to these features, we can guarantee sustainable design planters of high quality with a long lifespan and we therefore provide a 10 year warranty on this collection.

## **Grow a greener life**

We will follow our mission 'Grow a greener life' in everything we do and make. That is how we stand for growth and progress. We will help our customers to embrace a green lifestyle with a sustainable twist. Together we can work towards a sustainable future for ourselves, but also for next generations.

**Grow a greener life.**



## 01 Raw material

Mixture of polyethylene made with recycled material and wood fibres.



## 02 Big bags

The raw material hangs in big bags. Each big bag contains its own colour.



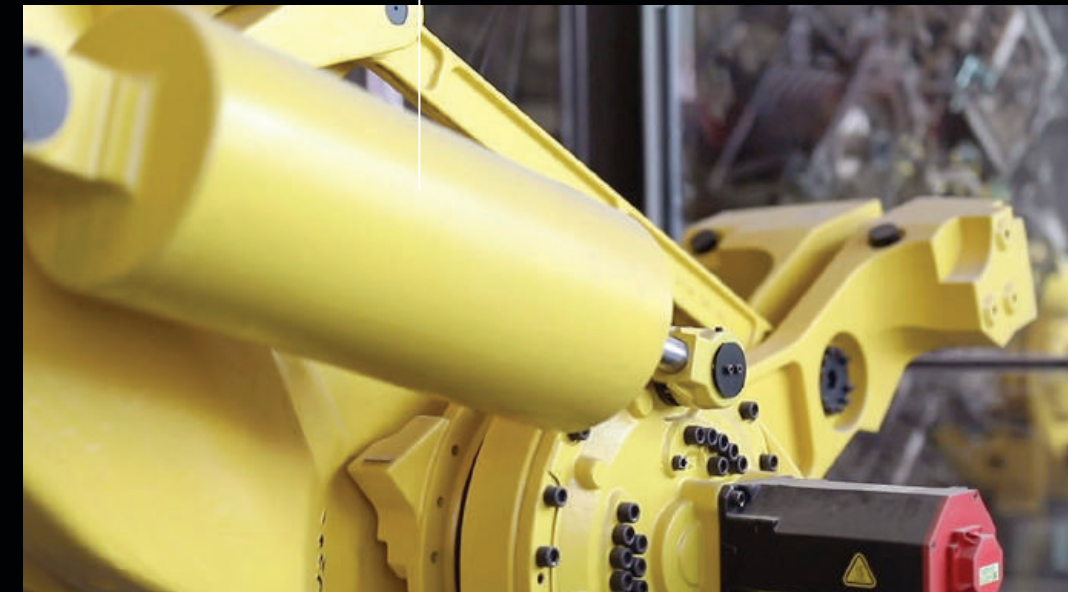
## 03 Filling system

The raw materials are automatically poured into the mould, using a filling system.



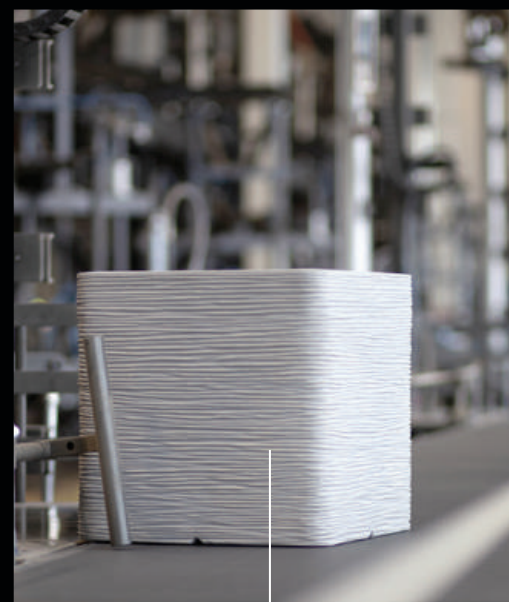
## 04 Own rotation moulding process

The mould is heated in order to melt and liquefy the powder. The machines spin around so that everything is distributed throughout the mould. The substance is then cooled to produce the flower pot.



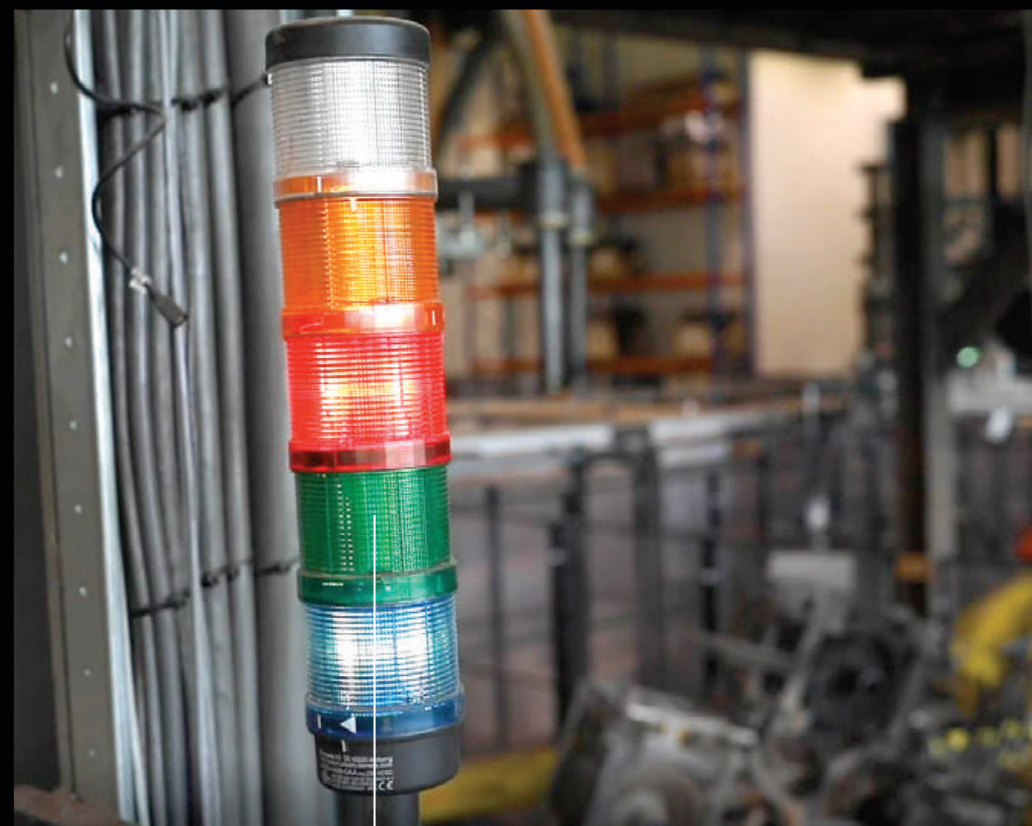
## 05 Orange inside

The two layers of the pot (outer layer and insulating layer) are made in a single cycle.



## 06 Moulds

Each pot model, texture and size has its own mould.



## 07 Day & night

Our Capi robots work 24/7.



## 08 Mould to belt

As soon as the robot is finished, the pot will automatically be taken to the conveyor belt.



## 09 Conveyor belt

The conveyor belt takes the pot to the quality control.



## 10 No waste!

The sharp edges will be removed by our quality control in order to finish the pot.  
The edges coming of the pot will be thrown into our own shredder. This means there is no waste during our whole production process.



## 11 Back to the roots

The material coming from our shredder goes back to our supplier. There they will be used for new materials.

# Cradle **2** cradle



Our pots are made with recycled materials  
and are 100% recyclable.





# Did you **know...**

100%

**recyclable**

Our Made in Holland collection is 100% recyclable and made with recycled materials.

2.000m<sup>2</sup>

**experience**

Our own Capi Experience has a size of 2.000m<sup>2</sup>. Will you come visit soon?

80%

**saving**

We save up to 80% of the energy with our own rotation moulding method of the Made in Holland collection.

16

**structures**

We have 16 different structures in our collection.

24/7

**production**

Our Capi robots work 24/7.

3

**houses**

We can give a home to 3 different types of animals: bees, birds, and butterflies.

24

**years experience**

Capi Europe reaches 24 years of experience in 2021.

10

**year warranty**

The Made in Holland collection has a warranty of 10 years.

72

**countries**

We are shipping to more than 72 countries.

2017

**new headquarters**

Capi Europe has a new headquarters since 2017.

692

**products**

We have 692 products in total. The total consists of different structures, colours, indoor, outdoor, accessories, etc.

2

**layers**

The Made in Holland planters consist of two layers. The outside layer shows the design, the second (orange) layer is a unique insulating layer.

For more Capi facts & figures visit: [capi-europe.com](https://capi-europe.com)



# What's new in 2021?



Nature  
**Rib NL**  
New colour:  
Dark grey

27



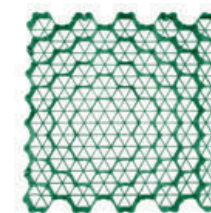
Nature  
**Tube NL**  
New colour:  
Dark grey

33



Butterfly  
**hotel**  
New product  
3 colours

41



Grass/gravel  
**pavement**  
New product  
2 colours

43



46

Design  
**Trolley**  
New colour:  
White



Plant  
**Cover**  
New design:  
Green

73



Lux  
**Retro**  
Special edition:  
Gold & silver



79

Nature  
**Groove**  
New sizes

Nature  
**Row NL**  
New colour:  
Olive green

29



Nature  
**Smooth NL**  
New colour:  
Dark grey

35

43

Rain barrel  
**NL**  
New texture &  
new colours



45



Watering  
**Cans**  
New colours  
Xala Lungo



72

Nature  
**Groove**  
Special edition:  
Gold



Nature  
**Groove**  
New model:  
Orchid pot

77

Nature  
**Rib**  
New model:  
Orchid pot

77



Lux  
**Heraldry**  
New colour:  
Black

96



What's  
new in 2021





Made  
**in Holland**  
*collection*



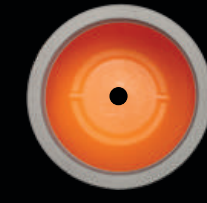


# Nature & Urban Made in Holland collection

The biggest part of the Capi collection is produced in our own factory in Tilburg. Because of our own production process, we are able to manufacture lightweight flower pots, which are 100% recyclable and come with a 10 year warranty. The orange interior is intended to represent their place of origin and has become a recognisable feature of our brand. The orange layer also provides the planters with insulation, offering your plants extra protection against both heat and cold.



indoor: 100% watertight

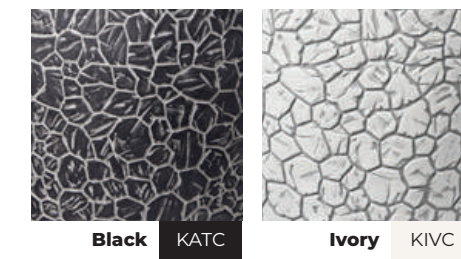


outdoor: drill a drainage hole



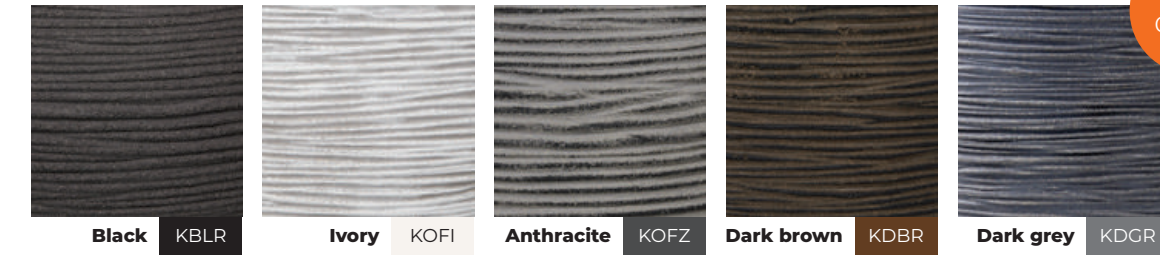
Made with recycled materials

## Nature Clay NL



Indoor & outdoor  
Made in Holland  
Collection NL

## Nature Rib NL



New colour

## Nature Row NL



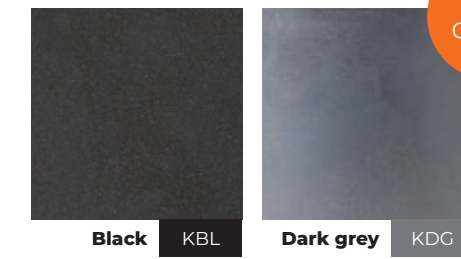
New colour

## Urban Tube NL



New colour

## Urban Smooth NL



New colour

- 100% recyclable
- indoor & outdoor
- insulating layer
- frost-resistant
- UV-resistant
- fracture-resistant
- light-weight

10 YEAR WARRANTY





I'm 100% recyclable



# Natural living



Nature is a source of inspiration thanks to its green leaves and shades, many textures and energy. Our Nature Clay NL, Nature Rib NL and Nature Row NL collections are based on these appearances. They form a unique, coherent movement in our collection. Each with its own characteristics.

*Inspired by nature*

- 100% recyclable
- indoor & outdoor
- insulating layer
- frost-resistant
- UV-resistant
- fracture-resistant
- light-weight

10 YEAR WARRANTY



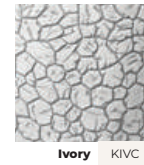
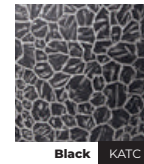


Made with recycled materials



Indoor & outdoor

Nature  
Clay **NL**



# Nature Clay **NL**

The Clay is inspired by cracked clay soil. It shows the process of nature where solid clay dries out and cracks. One of nature's many forms.



Planter Ball **Clay NL**

**932** Small 35 x 34  
**933** Medium 43 x 41

KATC KIVC



Vase Elegant Deluxe **Clay NL**

**1138** Medium 45 x 72  
**1132** Large 56 x 84

KATC KIVC



100% recyclable



indoor & outdoor



insulating layer



frost-resistant



UV-resistant



fracture-resistant



light-weight

**10** YEAR  
WARRANTY





# Nature Rib NL

The rhythmic Rib design is inspired by thin reeds moving in the wind.



Indoor & outdoor

Nature Rib NL



Vase Tapered Round Rib NL

362 Medium 42 x 38



Planter Rectangle Rib NL

963 Small 73 x 39 x 32



Vase Ball Rib NL

270 Small 40 x 32  
271 Large 62 x 48



Planter Square Rib NL

902 Small 30 x 30 x 30  
903 Medium 40 x 40 x 40  
904 Large 50 x 50 x 50



Planter Ball Rib NL

932 Small 35 x 34  
933 Medium 43 x 41  
935 Large 54 x 52



Vase Elegant Low Rib NL

782 Small 36 x 47  
783 Medium 46 x 58



Vase Elegant Deluxe Rib NL

1131 Small 40 x 60  
1138 Medium 45 x 72  
1132 Large 56 x 84



10 YEAR WARRANTY

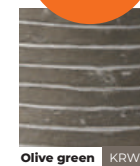
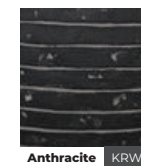
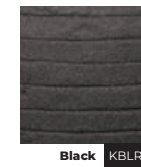




Indoor & outdoor

Nature  
Row **NL**

The broad Row lines are inspired by the sand waves on the beach.



# Nature Row **NL**



Vase Ball **Row NL**

**270** Small 40 x 32  
**271** Large 62 x 48



Vase Tapered Round **Row NL**

**362** Medium 42 x 38



Planter Square **Row NL**

**902** Small 30 x 30 x 30  
**903** Medium 40 x 40 x 40

KBLRO KRWI KRWZ KRWG

KBLRO KRWI KRWZ KRWG

KBLRO KRWI KRWZ KRWG



Planter Ball **Row NL**

**932** Small 35 x 34  
**933** Medium 43 x 41  
**935** Large 54 x 52



Vase Elegant Low **Row NL**

**782** Medium 36 x 47  
**783** Large 46 x 58



Vase Elegant Deluxe **Row NL**

**1131** Medium 40 x 60  
**1132** Large 56 x 84

KBLRO KRWI KRWZ KRWG

KBLRO KRWI KRWZ KRWG

KBLRO KRWI KRWZ KRWG



100% recyclable



indoor & outdoor



insulating layer



frost-resistant



UV-resistant



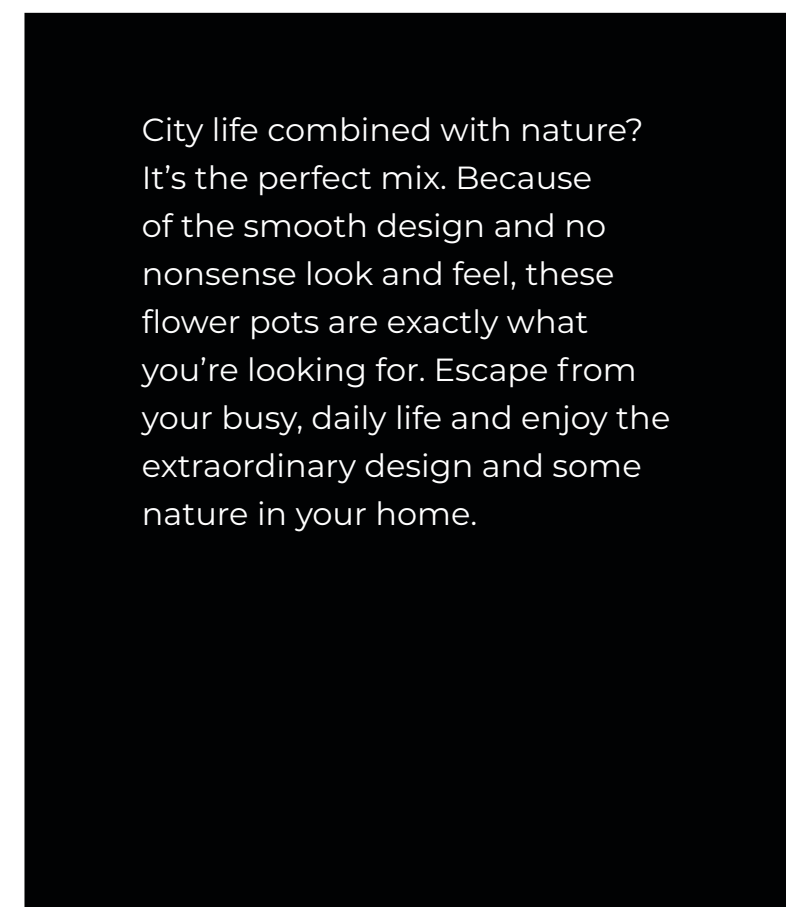
fracture-resistant



light-weight

10 YEAR  
WARRANTY





*Inspired by the city*

- 100% recyclable
- indoor & outdoor
- insulating layer
- frost-resistant
- UV-resistant
- fracture-resistant
- light-weight

**10**YEAR  
WARRANTY

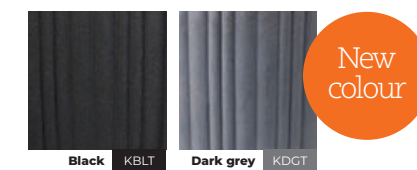




Made with recycled materials



MADE IN HOLLAND



# Urban Tube NL

The Tube design is inspired by the new generation of Urban. Subtle and modern, but makes a statement.



Vase Elegant Low **Tube NL**

<b>782</b> Medium	34 x 46
<b>783</b> Large	46 x 58
<b>785</b> XL	55 x 73

KBLT KDGT



Planter Ball **Tube NL**

<b>932</b> Small	35 x 34
<b>933</b> Medium	43 x 41
<b>935</b> Large	54 x 52

KBLT KDGT



Vase Tapered Round **Tube NL**

<b>801</b> Medium	40 x 40
<b>802</b> Large	55 x 52
<b>803</b> XL	70 x 70

KBLT KDGT



Indoor & outdoor

Urban Tube NL

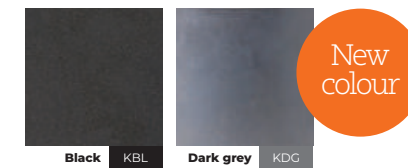
10 YEAR WARRANTY





The Smooth design is the perfect example of Urban. Old school and modern at the same time. A real classic in our collection.

# Urban Smooth NL



Planter Square **Smooth NL**

- 902** Small 30 x 30 x 30
- 903** Medium 40 x 40 x 40
- 904** Large 50 x 50 x 50



Vase Elegant Low **Smooth NL**

- 781** Small 26 x 36
- 782** Medium 36 x 47



Indoor & outdoor

Urban **Smooth NL**



Pillar **Smooth NL**

**243** Medium 36 x 36 x 79



Planter Rectangle **Smooth NL**

**952** Medium 36 x 36 x 79



Planter Ball **Smooth NL**

- 932** Small 35 x 34
- 933** Medium 43 x 41
- 935** Large 54 x 52



**10 YEAR** WARRANTY





Capi  
**accessories**





Made with  
recycled  
materials



## Capi accessories



The accessories collection has been added to increase the ease-of-use of our products. Various products will help consumers to embrace the green lifestyle, in a pleasant and easy way.





I'm 100%  
recyclable



Biodiversity is top priority at Capi Europe. Thanks to our biodiversity collection you will be able to make a contribution to nature. Our functional design products will help birds, bees, or butterflies. Together we will work on a richer biodiversity.

# Biodiversity



Outdoor

Capi  
biodiversity

## Gift packing

This product comes in a wooden crate. You can reuse this crate or it can be thrown away with the garden waste.



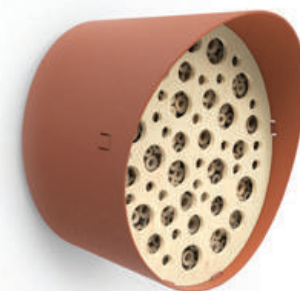
New  
product



### Butterfly hotel

002 Medium 24 x 19 x 23

ABFA ABFW ABFB



### Bee hotel

001 Medium 24 x 19 x 23

ABEA ABEW ABEB



### Bird feeder

001 Medium 24 x 19 x 23

ABIA ABIW ABIB



002

003



001

### Bird houses

001 Medium 24 x 19 x 23

002 Medium 24 x 19 x 23

003 Medium 24 x 19 x 23

ANBA ANBW ANBB



100%  
recyclable



outdoor



light-  
weight

3 YEAR  
WARRANTY





MADE IN HOLLAND

#### Reuse rainwater

Rainwater is soft and that's good for your plants. You also save on tap water. And that's good for everyone.

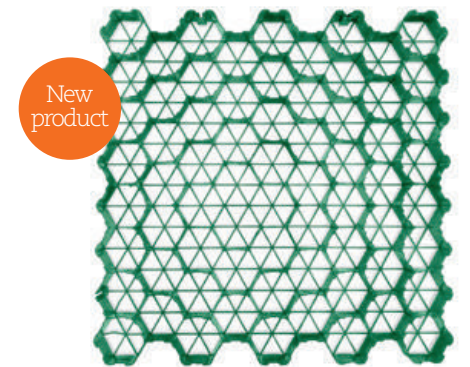
## Rainwater solutions

The climate is changing and the weather is becoming more extreme. There are more days with heavy and prolonged rainfall. And at the same time, there are more periods of sustained heat and drought. This has many adverse consequences. To help maintain a water friendly garden, Capi has developed a rain barrel and a grass/gravel pavement.

Thanks to the Capi Rain barrel, you will not only add a beautiful and practical product to your garden, but also contribute to biodiversity. The rain barrel has been produced sustainably in the Netherlands.

With the grass/gravel pavement you will allow grass to grow through them or you can put gravel inside it, so the ground will easily absorb rain water. It's an eco-friendly option for driveways and parking areas. Not only will the grass/gravel pavement contribute to biodiversity, but it is also a good solution to make your garden or driveway greener.

Together we take care of nature. **Grow a greener life.**



#### 1 m<sup>2</sup> Grass/gravel pavement

001 1m<sup>2</sup> = 4 pieces 50 x 50

GPDG GPGN



New texture

#### Capi Rain barrel **Clay NL**

1132 Large 56 x 123

RKATC RKIVC



#### Capi Rain barrel **Rib NL**

1132 Large 56 x 123

RKBLR RKOFI RKOFZ RKDBR RKDGR

New colour



The Rain barrels are also available as planters.

#### Capi Rain barrel **Row NL**

1132 Large 56 x 123

RKBLRO RKRWI RKRWZ RKRWG

New colour



outdoor





Outdoor & Indoor

Xala  
watering cans



New  
colours

Xala **Lungo** 12L.

<b>X110011</b>	Old green	46 x 26 x 43
<b>X110016</b>	Light grey	46 x 26 x 43
<b>X110019</b>	Gold	46 x 26 x 43
<b>X110021</b>	Curry yellow	46 x 26 x 43
<b>X110022</b>	Copper	46 x 26 x 43
<b>X110023</b>	Olive grey	46 x 26 x 43
<b>X110024</b>	Slate grey	46 x 26 x 43

Old green	Light grey	Gold
Curry yellow	Copper	Olive grey
	Slate grey	



New  
colours

Xala **Lungo** 8L.

<b>X110201</b>	Old green	40 x 22 x 37
<b>X110206</b>	Light grey	40 x 22 x 37
<b>X110225</b>	Gold	40 x 22 x 37
<b>X110221</b>	Curry yellow	40 x 22 x 37
<b>X110222</b>	Copper	40 x 22 x 37
<b>X110223</b>	Olive grey	40 x 22 x 37
<b>X110224</b>	Slate grey	40 x 22 x 37

Old green	Light grey	Gold
Curry yellow	Copper	Olive grey
	Slate grey	

# Xala watering cans

The Xala Lungo watering can is a real eye catcher. It combines the convenient and expressive aspects of a coffee pot. That's why this design should definitely be part of your interior. The Xala Lungo is available in 8L and 12L.



100%  
recyclable



indoor &  
outdoor



fracture-  
resistant



light-  
weight

3YEAR  
WARRANTY





# Capi accessories

Outdoor & Indoor

**Capi accessories**



## Pot pads

Indoor: Protects the floor from scratches.  
Outdoor: Ensures excellent drainage.

- 001 Outdoor 5 x 1,5
- 001 Indoor 5 x 1,5

APO API



## Wall grip

Holder for flower pots. Brighten up your home with greenery on the walls!

- 001 Small 3,5 x 5,6 x 13
- 002 Medium 3,5 x 6,1 x 16

AWGA AWGW

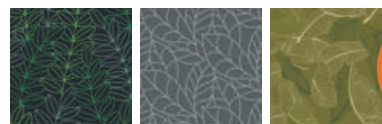


## Hydrocan

Automatically supplies water to the roots of the plant for a controlled water balance.

- 001 Large 10 x 7 x 25

AHC



New colour



## Plant cover

Protect your plants against frost in winter with our new plant covers.

- 001 Small 150 x 75
- 002 Medium 200 x 100
- 003 Large 250 x 150

ACBK ACGY ACGN  
Black Grey Green



New colour

## Design trolley

Movable plant trolley, for indoor and outdoor.

- 001 Small 30 x 7,6
- 002 Medium 40 x 7,6

ATA ATLG ATW





# Capi care

Extend the life of our products with the best maintenance products. Capi care's maintenance products remove slight blemishes and completely restore an item's original colours and deep shine.



## Clean & Shine

**SUP 232** MOQ/VPE 12  
Suitable for Lux Terrazzo Black + White  
Spots disappear easily with this product. Besides, you clean the entire flower pot with it so the deep shine will come back completely.



## Black protector lacquer

**SUP 212** MOQ/VPE 12  
Suitable for Lux Terrazzo Black + TER 301  
The flower pot lacquer is especially designed for our black Terrazzo products. The lacquer ensures that the intense black colour comes up again.



All our Capi care products are waterbased and eco-friendly!



## Nano protector

**SUP 260** MOQ/VPE 12  
Suitable for Made in Holland  
With the Nano protector you can ensure that the flower pots become (extra) water-repellent and UV-resistant.



Outdoor & Indoor

Capi accessories

# Pot inserts

With our pot inserts, you can use outdoor pots indoors. If you have a pot with a drainage hole, you should not use it indoors without an insert, otherwise water may damage your surfaces or floor. A flower pot with a drainage hole must therefore always have an insert when used indoors.



<b>IPT 100</b>	<b>IPT 106</b>
16 x 20	32 x 28
<b>IPT 101</b>	<b>IPT 107</b>
21 x 20	34 x 30
<b>IPT 103</b>	<b>IPT 108</b>
24 x 20	38 x 24
<b>IPT 104</b>	<b>IPT 109</b>
27 x 21	41 x 26
<b>IPT 105</b>	<b>IPT 110</b>
29 x 35	44 x 30

**Rack for indoor pot liner**  
**SUP 083**



3 YEAR WARRANTY





Outdoor  
**collection**

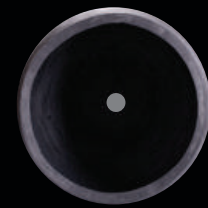




Nature, Lux & Classic

# Our outdoor *collection*

A natural look, Scandinavian white, a Terrazzo look, or do you prefer gracefully classic? Our outdoor collection has it all. The three different collections offer different styles, so there is always one (or several) that suits you. Each flower pot has a high finish and a robust appearance. The planters are practical and easy to use.



This drainage hole allows the soil to breathe, which ensures healthy roots. The drainage hole also makes the planter frost-resistant.

Outdoor

Outdoor  
Collection

## Suitable for outdoor

And for indoor when using a pot insert.  
You can find the pot inserts at page 49.

Nature **Stone** Nature **Rib**



Ivory STI



Ivory OFI

Lux **Terrazzo**



Black FIT



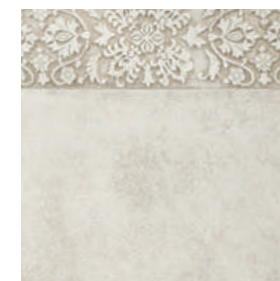
Light grey FGT

Lux **White**



White WFL

Classic



Ivory OFI



outdoor



frost-resistant



UV-resistant



light-weight

3 YEAR  
WARRANTY





# Natural outdoor



Being connected with nature makes you happier. And happiness is important to us. That is why our nature outdoor collections are inspired by various structures that you also can find outside.

*Inspired by nature*



outdoor



frost-resistant



UV-resistant



light-weight

**3** YEAR  
WARRANTY





Outdoor

Nature  
Stone



Planter Ball **Stone**

- 931** XS 27 x 26
- 932** Small 35 x 34
- 933** Medium 42 x 40
- 939** Set of 2 931;2
- 439** Set of 2 932;3
- 934** Set of 3 931;2;3

STI



Planter Square **Stone**

- 902** Small 31 x 31 x 31
- 903** Medium 41 x 41 x 41
- 406** Set of 2 902;3

STI

The slate Stone design is a composition of small elongated stones.

# Nature Stone



Vase Elegant Deluxe **Stone**

- 1131** Medium 39 x 60

STI



Planter Rectangle **Stone**

- 951** Small 26 x 26 x 58
- 952** Medium 32 x 32 x 72
- 954** Set of 2 951;2

STI



outdoor



frost-resistant



UV-resistant



light-weight

3 YEAR  
WARRANTY





The rhythmic Rib design is inspired by thin reed moving in the wind.

# Nature Rib



Planter Square **Rib**

**902** Small 31 x 31 x 31  
**903** Medium 41 x 41 x 41  
**406** Set of 2 902;3

OFI



Planter Square **Rib**

**361** Small 30 x 29  
**362** Medium 41 x 38  
**366** Set of 2 361;2

OFI



Planter Rectangle **Rib**

**951** Small 26 x 26 x 58  
**952** Medium 32 x 32 x 72  
**954** Set of 2 951;2

OFI



Vase Elegant Deluxe

**1131** Medium 39 x 60

OFI



Planter Ball **Rib**

**931** XS 27 x 26  
**932** Small 35 x 34  
**933** Medium 42 x 40  
**935** Large 53 x 51  
**939** Set of 2 931;2  
**934** Set of 3 931;2;3  
**937** Set of 4 931;2;3;5  
**439** Set of 2 932;3

OFI



Planter Rectangle **Rib**

**961** Small 56 x 22 x 22  
**962** Medium 64 x 30 x 26  
**965** Set of 2 961;2

OFI



outdoor



frost-resistant



UV-resistant



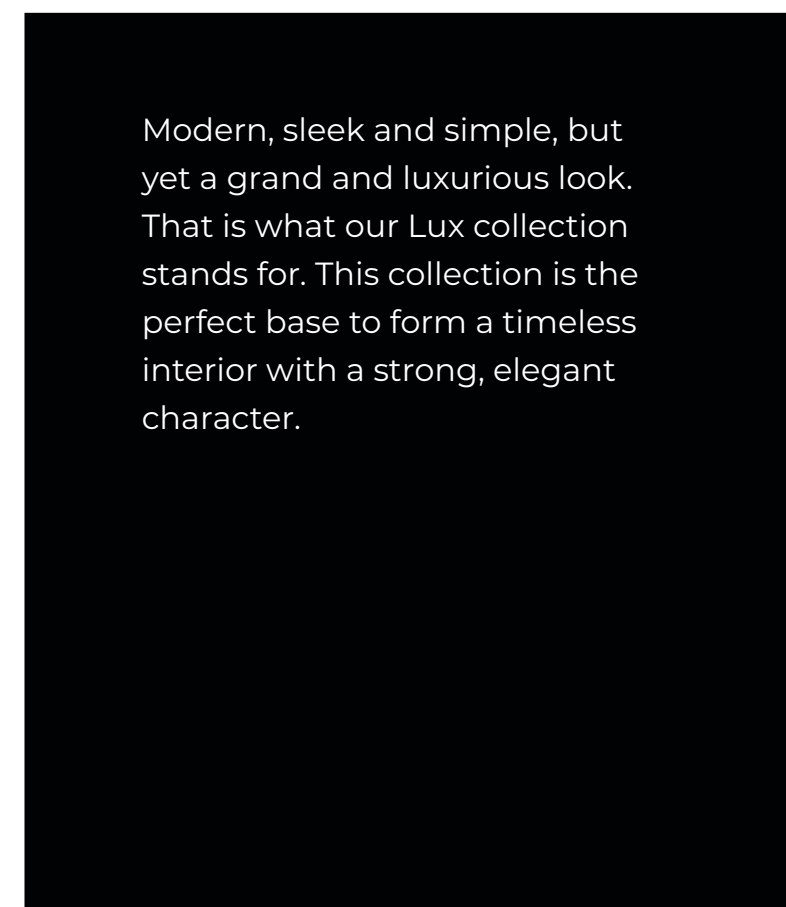
light-weight

Outdoor

Nature  
**Rib**

**3** YEAR  
WARRANTY





*Inspired by luxury living*



outdoor



frost-resistant



UV-resistant



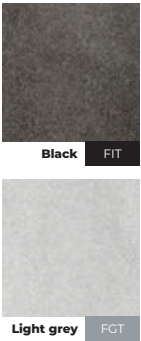
light-weight

**3** YEAR  
WARRANTY



The all time favourite Terrazzo look is inspired by modern luxury and heavy traditional Terrazzo, but is now lightweight.

# Lux Terrazzo



Outdoor

Lux  
Terrazzo

### Planter Square Terrazzo

<b>901</b> XS	20 x 20 x 20
<b>902</b> Small	30 x 30 x 30
<b>903</b> Medium	40 x 40 x 40
<b>904</b> Large	50 x 50 x 50
<b>905</b> XL	60 x 60 x 60
<b>907</b> XXL	80 x 80 x 80
<b>928</b> XXXL	100 x 100 x 100

FIT

FGT

### Planter Rectangle Terrazzo

<b>951</b> Small	25 x 25 x 67
<b>952</b> Medium	35 x 35 x 78
<b>953</b> Large	45 x 45 x 100
<b>954</b> Set of 2	95;52
<b>955</b> Set of 3	95;52;53

FIT

FGT



### Planter Rectangle Low Terrazzo

<b>961</b> Small	73 x 20 x 20
<b>962</b> Medium	88 x 28 x 28
<b>963</b> Large	100 x 40 x 40
<b>965</b> Set of 2	96;12
<b>964</b> Set of 3	96;12;3

FIT

FGT



### Middle Envelope Terrazzo

<b>108</b> Medium	64 x 25 x 35
<b>109</b> Large	80 x 32 x 44
<b>110</b> XL	100 x 40 x 55
<b>111</b> Set of 2	108;9
<b>112</b> Set of 3	108;9;10

FIT

FGT



### Planter Envelope Terrazzo

<b>971</b> Medium	60 x 24 x 74
<b>972</b> Large	88 x 36 x 100
<b>973</b> Set of 2	97;12

FIT

FGT



### Bowl Flat Terrazzo

<b>380</b> Small	27 x 7
<b>381</b> Medium	34 x 9
<b>382</b> Large	44 x 12
<b>384</b> Set of 2	380;1
<b>383</b> Set of 3	380;1;2

FIT



### Gondola Terrazzo

<b>551</b> Medium	46 x 20 x 13
<b>552</b> Large	61 x 26 x 19
<b>555</b> Set of 2	55;12

FIT



### Bowl

<b>301</b> Medium	36 x 8
-------------------	--------



TER

Original  
Terrazzo



Without water hole, but may not be 100% watertight



### Planter Tapered Terrazzo

<b>911</b> Small	24 x 24 x 46
<b>912</b> Medium	32 x 32 x 60
<b>913</b> Large	41 x 41 x 90
<b>919</b> Set of 2	91;12
<b>914</b> Set of 3	91;12;3

FIT

FGT



### Vase Elegant Low Terrazzo

<b>782</b> Medium	36 x 47
<b>783</b> Large	46 x 58
<b>790</b> Set of 2	782;3

FIT

FGT



### Planter Ball Terrazzo

<b>931</b> XS	28 x 26	<b>939</b> Set of 2	93;12
<b>932</b> Small	37 x 37	<b>934</b> Set of 3	93;12;3
<b>933</b> Medium	45 x 44	<b>937</b> Set of 4	93;12;3;5
<b>935</b> Large	54 x 54	<b>938</b> Set of 5	93;12;3;5;6
<b>936</b> XL	65 x 63	<b>986</b> Set of 6	93;12;3;5;6;81
<b>981</b> XXL	68 x 76	<b>987</b> Set of 7	93;12;3;5;6;81;82
<b>982</b> XXXL	91 x 87		
<b>991</b> XXXXL	113 x 108		

FIT

FGT



outdoor



frost-resistant



UV-resistant



light-weight

3 YEAR  
WARRANTY





The White collection is inspired by the modern, minimalistic trend. White flower pots are elegant, and contrasting with any style.

# Lux White

Outdoor

## Lux White



Planter Ball **White**

<b>931</b> XS	28 x 26	<b>939</b> Set of 2	931;2
<b>932</b> Large	37 x 37	<b>439</b> Set of 2	932;3
<b>933</b> Medium	45 x 44	<b>934</b> Set of 3	931;2;3
<b>935</b> Large	54 x 54	<b>937</b> Set of 4	931;2;3;5

WFL



Planter Square **White**

<b>901</b> XS	20 x 20 x 20	<b>906</b> Set of 3	901;2;3
<b>902</b> Small	30 x 30 x 30	<b>406</b> Set of 2	902;3
<b>903</b> Medium	40 x 40 x 40	<b>908</b> Set of 4	901;2;3;4
<b>904</b> Large	50 x 50 x 50	<b>407</b> Set of 3	902;3;4
<b>905</b> XL	60 x 60 x 60	<b>408</b> Set of 2	903;4
		<b>909</b> Set of 5	901;2;3;4;5

WFL



Planter Rectangle **White**

<b>951</b> Small	25 x 25 x 67
<b>952</b> Medium	35 x 35 x 78
<b>953</b> Large	45 x 45 x 100
<b>954</b> Set of 2	951;2
<b>955</b> Set of 3	951;2;3

WFL



Planter Rectangle Low **White**

<b>961</b> Small	73 x 20 x 20
<b>962</b> Medium	88 x 28 x 28
<b>963</b> Large	100 x 40 x 40
<b>965</b> Set of 2	961;2
<b>964</b> Set of 3	961;2;3

WFL



outdoor



frost-resistant



UV-resistant



light-weight

3 YEAR WARRANTY





# Classic



Capi Classic pots are very decorative. These ornamental pots have a very distinctive appearance and their subtle ivory colour and authentic decorative edging makes them timeless.

Characteristic of Greek and Roman antiquity, very typical of its kind.

# Classic



French Vase **Classic**

- 653** Small 22 x 31
- 654** Medium 38 x 51
- 655** Large 46 x 67

OFI



French Vase Low **Classic**

- 656** Large 51 x 54

OFI



Planter Round Deco Rim **Classic**

- 711** Small 29 x 25
- 712** Medium 34 x 30
- 713** Large 40 x 35
- 717** Set of 3 711;2;3

OFI

Outdoor

**Classic**

*Inspired by European architecture*



outdoor



frost-resistant



UV-resistant



light-weight

**3** YEAR WARRANTY





# Indoor **collection**





# Our indoor *collection*

Plants will help to reduce stress, so get some new indoor planters and enjoy the life you're living. It doesn't matter if you love the Nature indoor collection, or if you prefer the Lux indoor planters. Mix and match and use different models for a playful effect. It's up to you!

## Suitable for indoor

### Nature **Groove**



Gold BGVGB

Special  
edition

### Lux **Retro**



Gold BRTG



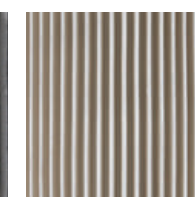
Silver BRTS

Special  
edition

### Nature **Groove**



Black BGVZ

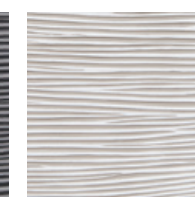


Ivory BCVI

### Nature **Rib**

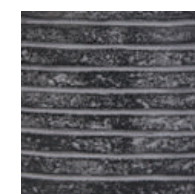


Black BOFZ



Ivory BOFI

### Nature **Row**

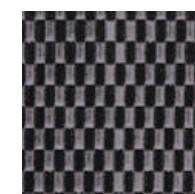


Black BRWZ

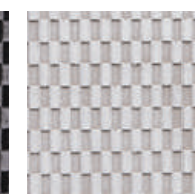


Ivory BRWI

### Nature **Wave**



Black BWVZ



Ivory BWVI

### Nature **Loop**

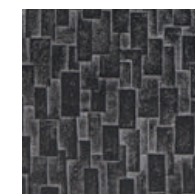


Black BLPZ



Ivory BLPI

### Nature **Stone**



Black BSTZ



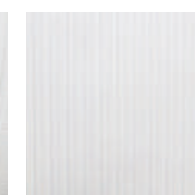
Ivory BSTI

### Lux **Arc**



White BARW

### Stripes



White BSSW

### Split

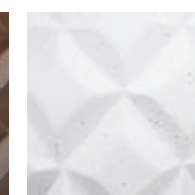


White BSPW

### Lux **Heraldry**



Rust BSRI



White BSCI



Black BSBI

New  
colour



indoor



light-  
weight



Without water hole, but may  
not be 100% watertight

**3**YEAR  
WARRANTY

Indoor

Indoor  
Collection





The Nature Groove Gold is inspired by grooves in rocks and mountains. In combination with gold it's the perfect highlight in every room.

New collection

# Nature Groove

Special edition



Indoor  
Special edition



Planter Ball **Groove**

- 131** Small 7 x 7
- 139** Medium 9 x 9
- 132** Large 15 x 14
- 133** XL 17 x 16
- 134** XXL 23 x 21

BCVGB



Vase Ball **Groove**

- 101** Small 10 x 9
- 109** Medium 12 x 9
- 102** Large 17 x 14
- 103** XL 22 x 19
- 104** XXL 29 x 25

BCVGB



Planter Ball **Retro**

- 131** Small 8 x 7
- 139** Medium 10 x 9
- 132** Large 14 x 13
- 133** XL 17 x 16
- 134** XXL 24 x 21

BRTG

BRTS



Vase Ball **Retro**

- 101** Small 10 x 9
- 109** Medium 12 x 9
- 102** Large 17 x 14
- 103** XL 23 x 19
- 104** XXL 29 x 25

BRTG

BRTS



# Lux Retro

Special edition

The Lux Retro is inspired by the old and the new. Gold, silver, round shapes and a smooth design. Mix old and new together to create luxury.



Gold BRTG



Silver BRTS

New collection



indoor



light-weight



Without water hole, but may not be 100% watertight

3 YEAR WARRANTY





*Inspired by nature*



## Nature indoor



Bringing nature into your house is no longer a problem with our Nature indoor collection. Every planter is unique because they are handmade. The different shapes and structures offer a lot of variation. From timeless Rib until Trendy Groove and much more. Our indoor collection is available in calm, earthy colours which fit in every home.



indoor



light-weight



Without water hole, but may not be 100% watertight

**3** YEAR  
WARRANTY





New:  
Orchid  
pots

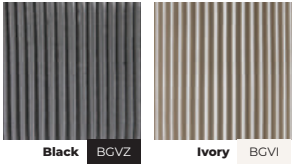
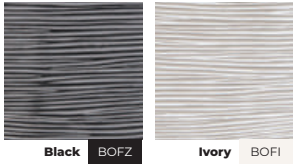
Indoor

Orchid  
Pots

New  
model

# Orchid Pots

Orchids are one of a kind and these new orchid pots are specially created for these plants. The shape of the planter will allow a better drainage and air flow to the roots of the Orchid.



Orchid Pot **Rib**

- 321 Small 7 x 9
- 322 Medium 14 x 17



Orchid Pot **Groove**

- 321 Small 7 x 9
- 322 Medium 14 x 17



indoor



light-weight



Without water hole, but may not be 100% watertight

3 YEAR  
WARRANTY





Indoor

## Nature Groove

# Nature Groove

The Nature Groove collection is inspired, as the name says, by grooves. In particular, it takes inspiration from the vertical grooves in rocks and mountains that arise from natural changes occurring over the years.



### Orchid Pot **Groove**

- 321** Small 7 x 9
- 322** Medium 14 x 17

BGVZ BGVI



Also available in gold

### Planter Ball **Groove**

- 131** Small 8 x 7
- 139** Medium 10 x 9
- 132** Large 14 x 13
- 133** XL 17 x 16
- 134** XXL 23 x 21

BGVZ BGVI BGVGB

New Sizes



### Vase Cylinder **Groove**

- 311** Small 8 x 8,5
- 312** Medium 11 x 12
- 313** Large 15 x 16
- 314** XL 19 x 21
- 315** XXL 23 x 25

BGVZ BGVI

New Sizes



Also available in gold

### Vase Ball **Groove**

- 101** Small 10 x 9
- 109** Medium 12 x 9
- 102** Large 17 x 14
- 103** XL 22 x 19
- 104** XXL 29 x 25

BGVZ BGVI BGVGB

New Sizes



indoor



light-weight



Without water hole, but may not be 100% watertight

**3** YEAR WARRANTY





The rhythmic Rib design is inspired by thin reeds moving in the wind.

# Nature Rib



Bowl Round **Rib**

**041** Small 33 x 10

BOFZ BOFI



Planter Oval **Rib**

**841** Large 59 x 14 x 35

BOFZ BOFI



Oval Planter **Rib**

**191** Small 27 x 13 x 14  
**192** Medium 32 x 12 x 19  
**193** Large 33 x 15 x 36

BOFZ BOFI



Different sizes, different dimensions

Indoor

Nature **Rib**



Vase Tapered Round **Rib**

**141** Small 9 x 7  
**149** Medium 11 x 9  
**142** Large 15 x 13

BOFZ BOFI



Planter Ball **Rib**

**131** Small 8 x 7  
**139** Medium 10 x 9  
**132** Large 14 x 13  
**133** XL 18 x 16  
**134** XXL 24 x 21

BOFZ BOFI



Vase Ball **Rib**

**101** Small 10 x 9  
**109** Medium 12 x 10  
**102** Large 17 x 14  
**103** XL 23 x 19  
**104** XXL 29 x 25

BOFZ BOFI



Orchid Pot **Rib**

**321** Small 7 x 9  
**322** Medium 14 x 17

BOFZ BOFI

New model



Planter Square **Rib**

**209** Small 11 x 11 x 11  
**202** Large 15 x 15 x 15

BOFZ BOFI



Vase Cylinder **Rib**

**211** Small 12 x 11  
**212** Medium 14 x 14  
**213** Large 17 x 17

BOFZ BOFI



Vase Round **Rib**

**221** Small 15 x 9  
**222** Medium 17 x 11  
**223** Large 22 x 13

BOFZ BOFI



Vase Elegant High **Rib**

**231** Small 12 x 15  
**232** Medium 15 x 17  
**233** Large 18 x 21

BOFZ BOFI



indoor



light-weight



Without water hole, but may not be 100% watertight

3 YEAR WARRANTY





The broad Row lines are inspired by the sand waves of the beach.

# Nature Row



Planter Oval **Row**

**841** Large 59 x 14 x 35

BRWZ BRWI



Planter Ball **Row**

**131** Small 8 x 7  
**139** Medium 10 x 9  
**132** Large 14 x 13

BRWZ BRWI



Vase Elegant High **Row**

**231** Small 12 x 15  
**232** Medium 15 x 17  
**233** Large 18 x 21

BRWZ BRWI



Vase Ball **Row**

**101** Small 10 x 9  
**109** Medium 12 x 10  
**102** Large 17 x 14

BRWZ BRWI



Vase Tapered Round **Row**

**141** Small 9 x 7  
**149** Medium 11 x 9  
**142** Large 15 x 13

BRWZ BRWI



Planter Square **Row**

**209** Small 11 x 11 x 11  
**202** Large 15 x 15 x 15

BRWZ BRWI



Vase Cylinder **Row**

**211** Small 12 x 11  
**212** Medium 14 x 14  
**213** Large 17 x 17

BRWZ BRWI

Indoor

Nature  
**Row**



indoor



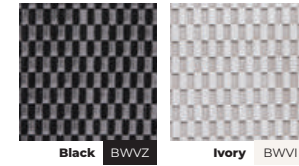
light-weight



Without water hole, but may not be 100% watertight

**3**YEAR  
WARRANTY





The new Wave design is inspired by woven rattan, which shows the perfect contrast between nature and being hand made.

# Nature Wave



Vase Ball **Wave**

- 101** Small 10 x 9
- 109** Medium 12 x 10
- 102** Large 17 x 14

BWVZ BWVI



Vase Elegant Wide **Wave**

- 291** Small 10 x 11
- 292** Medium 12 x 14
- 293** Large 15 x 20

BWVZ BWVI



Planter Ball **Wave**

- 131** Small 8 x 7
- 139** Medium 10 x 9
- 132** Large 14 x 13

BWVZ BWVI



Planter Ball High **Wave**

- 271** Small 9 x 12
- 272** Medium 10 x 14
- 273** Large 13 x 18

BWVZ BWVI



Vase Elegant High **Wave**

- 231** Small 12 x 15
- 232** Medium 15 x 17
- 233** Large 18 x 21

BWVZ BWVI

Indoor

Nature Wave



indoor



light-weight



Without water hole, but may not be 100% watertight

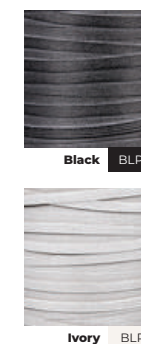
3 YEAR WARRANTY





The new Loop design is inspired by the endless process of nature looping around the flower pots.

# Nature Loop



Indoor

**Nature Loop**

Different sizes, different dimensions



Vase Elegant **Loop**

- 121** Small 8 x 8
- 129** Medium 10 x 10
- 122** Large 15 x 15

BLPZ BLPI

Oval Planter **Loop**

- 191** Small 27 x 13 x 14
- 192** Medium 32 x 12 x 19
- 193** Large 33 x 15 x 36

BLPZ BLPI



Vase Cylinder **Loop**

- 211** Small 12 x 11
- 212** Medium 14 x 14
- 213** Large 17 x 17

BLPZ BLPI

Vase Elegant High **Loop**

- 231** Small 12 x 15
- 232** Medium 15 x 17
- 233** Large 18 x 21

BLPZ BLPI



indoor



light-weight



Without water hole, but may not be 100% watertight

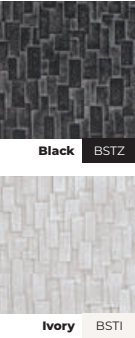
**3**YEAR WARRANTY





The slate Stone design is a composition of small elongated stones.

# Nature Stone



Different sizes, different dimensions



Indoor

## Nature Stone



Planter Oval **Stone**

**841** Large 59 x 14 x 35

BSTZ BSTI



Oval Planter **Stone**

**191** Small 27 x 13 x 14  
**192** Medium 32 x 12 x 19  
**193** Large 33 x 15 x 36

BSTZ BSTI



Vase Ball **Stone**

**101** Small 10 x 9  
**109** Medium 12 x 10  
**102** Large 17 x 14

BSTZ BSTI



Bowl Round **Stone**

**041** Small 33 x 10

BSTZ BSTI



Planter Ball **Stone**

**131** Small 8 x 8  
**139** Medium 10 x 9  
**132** Large 14 x 13

BSTZ BSTI



Vase Tapered Round **Stone**

**141** Small 9 x 7  
**149** Medium 11 x 9  
**142** Large 15 x 13

BSTZ BSTI



Vase Elegant High **Stone**

**231** Small 12 x 15  
**232** Medium 15 x 17  
**233** Large 18 x 21

BSTZ BSTI



Planter Square **Stone**

**209** Small 11 x 11 x 11  
**202** Large 15 x 15 x 15

BSTZ BSTI



Vase Cylinder **Stone**

**211** Small 12 x 11  
**212** Medium 14 x 14  
**213** Large 17 x 17

BSTZ BSTI



indoor



light-weight



Without water hole, but may not be 100% watertight

**3** YEAR WARRANTY





Lux  
indoor



The Lux indoor collection is inspired by architecture. The minimalistic repetition in these planters give them an exceptional character. Timeless, outspoken, and soft. Let your plant tell its own story with the Lux indoor collection.

*Inspired by luxury living*



indoor



light-weight



Without water hole, but may not be 100% watertight

**3** YEAR  
WARRANTY



# Lux Arc

The Arc collection is inspired by contemporary architecture. A perfect combination between minimalistic and grand.



Vase Ball **Arc**

**101** Small 10 x 9  
**109** Medium 12 x 10  
**102** Large 17 x 14

BARW



Planter Ball High **Arc**

**271** Small 9 x 12  
**272** Medium 10 x 14  
**273** Large 13 x 16

BARW



Vase Elegant Wide **Arc**

**291** Small 10 x 11  
**292** Medium 12 x 14  
**293** Large 15 x 20

BARW



Indoor

Lux  
Arc & Stripes

# Lux Stripes

The Stripes collection is as simple as it sounds, inspired by stripes. Small, big, various, vertical stripes.



Planter Ball **Stripes**

**131** Small 8 x 7  
**139** Medium 10 x 9  
**132** Large 14 x 13

BSSW



Vase Cylinder **Stripes**

**211** Small 12 x 11  
**212** Medium 14 x 14  
**213** Large 17 x 17

BSSW



indoor



light-weight



Without water hole, but may not be 100% watertight

3 YEAR  
WARRANTY





# Lux Split

The Split collection is inspired by the trend of combination. Why choose when you can do both?



Vase Elegant **Split**

- 121** Small 8 x 8
- 129** Medium 10 x 10
- 122** Large 15 x 15

BSPW



Vase Cylinder **Split**

- 211** Small 12 x 11
- 212** Medium 14 x 14
- 213** Large 17 x 17

BSPW



Vase Elegant High **Split**

- 231** Small 12 x 15
- 232** Medium 15 x 17
- 233** Large 18 x 21

BSPW



indoor



light-weight



Without water hole, but may not be 100% watertight

**3**YEAR  
WARRANTY

Indoor

**Lux  
Split**







Vase Ball **Heraldry**

<b>101</b>	XS	10 x 9
<b>109</b>	Small	12 x 10
<b>102</b>	Medium	18 x 15
<b>103</b>	Large	22 x 18



New colours



Vase Tapered Round **Heraldry**

<b>111</b>	XS	8 x 9
<b>119</b>	Small	9 x 10
<b>112</b>	Medium	14 x 15
<b>113</b>	Large	18 x 19

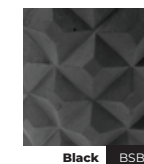
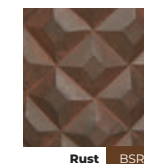


New colours



Indoor

Lux  
**Heraldry**



New colour

# Lux **Heraldry**

The unique Heraldry indoor series has a striking appearance with its diamond texture.



Planter Oval **Heraldry**

<b>841</b>	Small	59 x 14 x 35
<b>842</b>	Large	83 x 29 x 40
<b>844</b>	Set of 2	841;2



Bowl **Heraldry**

<b>831</b>	Small	34 x 15
<b>832</b>	Medium	44 x 20
<b>834</b>	Set of 2	831;2



Vase Elegant **Heraldry**

<b>811</b>	Medium	44 x 69
<b>812</b>	Large	59 x 87
<b>814</b>	Set of 2	811;2



Vase Tapered Round **Heraldry**

<b>801</b>	Small	38 x 40
<b>802</b>	Medium	51 x 52
<b>804</b>	Set of 2	801;2



indoor



light-weight



Without water hole, but may not be 100% watertight

**3**YEAR  
WARRANTY



# Warranty & service

Every single Capi product comes with a warranty. Each product has its own. The Made in Holland collection has a 10-year warranty on manufacturing defects. The rest of our collection comes with a 3-year warranty on manufacturing defects.

If anything happens to a Capi product when it is in use, or when a customer comes back with a complaint about a product, please do not hesitate to contact one of our service managers. They will be happy to help you. To remain the most efficient conversation, please send an email to [service@capi-europe.com](mailto:service@capi-europe.com). It will be very helpful if you would describe and attach the following:

- Description of the complaint.
- Type of product and size.
- Photos of the product and their complaint.
- Purchase receipt.

If you're not sure if the complaint of your Capi product is covered, you can reach out by phone too. Please call +31 (0) 13 511 50 50 during workdays (08:00 to 17:00). Of course, you can also contact our services managers for any other questions you have about Capi products.

Read more about our warranty conditions at

[capi-europe.com/en/guarantee](https://capi-europe.com/en/guarantee)



**3** YEAR  
WARRANTY



## Scan **book**

As a business customer, it can be helpful to do a quick search for articles. For this reason we are again offering a scan book. But this year it's a little different. We think our environment is very important, so we decided to not print this part. By not printing this part of the file, we save up to 15 pages per brochure.

This year our Scan book is available as a PDF file which you can ask for at your account manager or send an email to [info@capi-europe.com](mailto:info@capi-europe.com) if you want to receive it. The scan book still contains all articles that can be ordered. This includes both the sets and the articles that are available individually. In addition to the article details and barcodes, there is also a reference to the page of the brochure where you can find the specific article. You can also find the order unit and the dimensions of the planters here. We hope this will make ordering a lot easier and faster.

Of course it is up to you if you want to print those pages yourself. But let's think about the future and try not to waste paper. Together we will take care of our nature. **Grow a greener life.**



